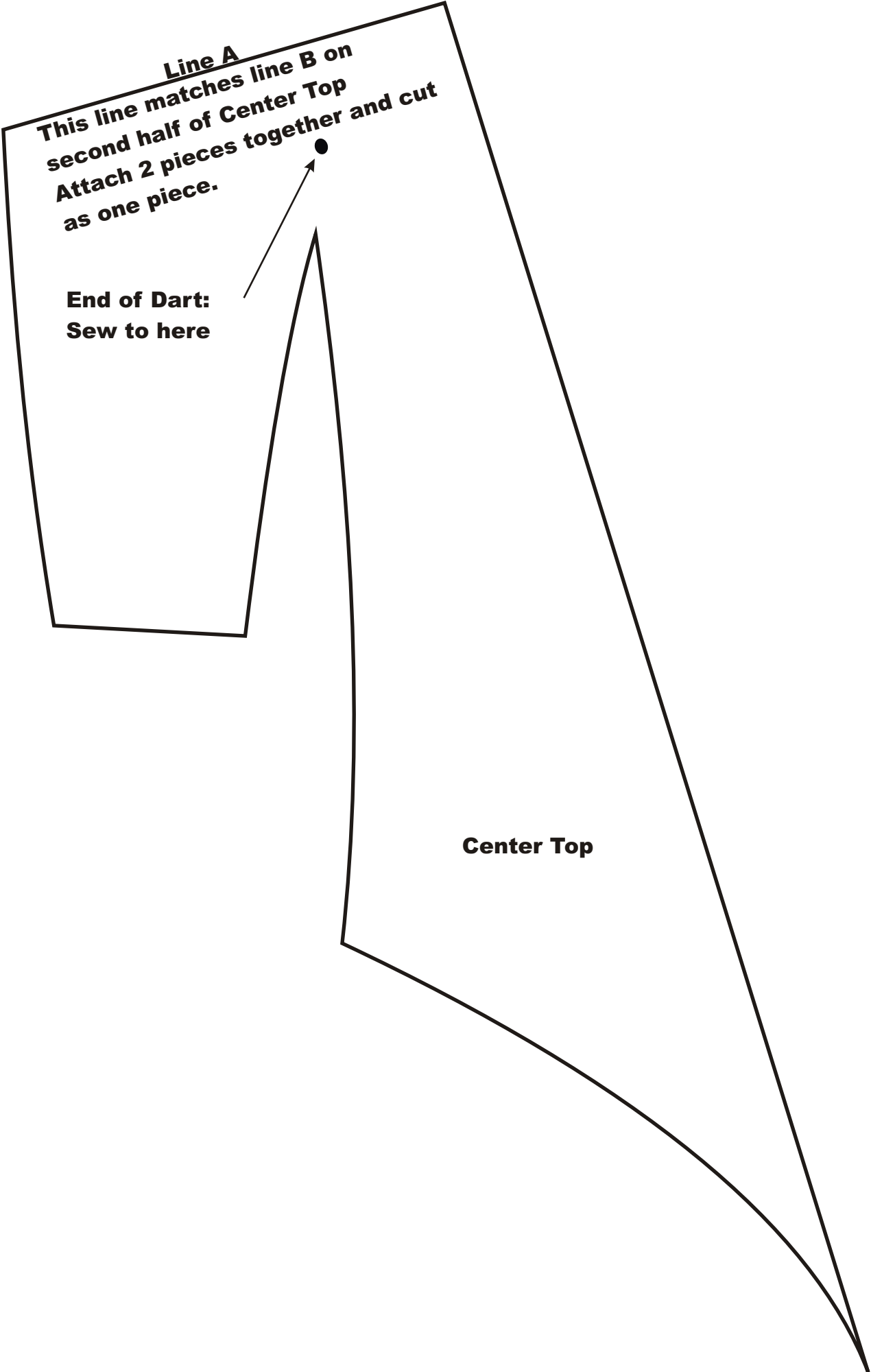
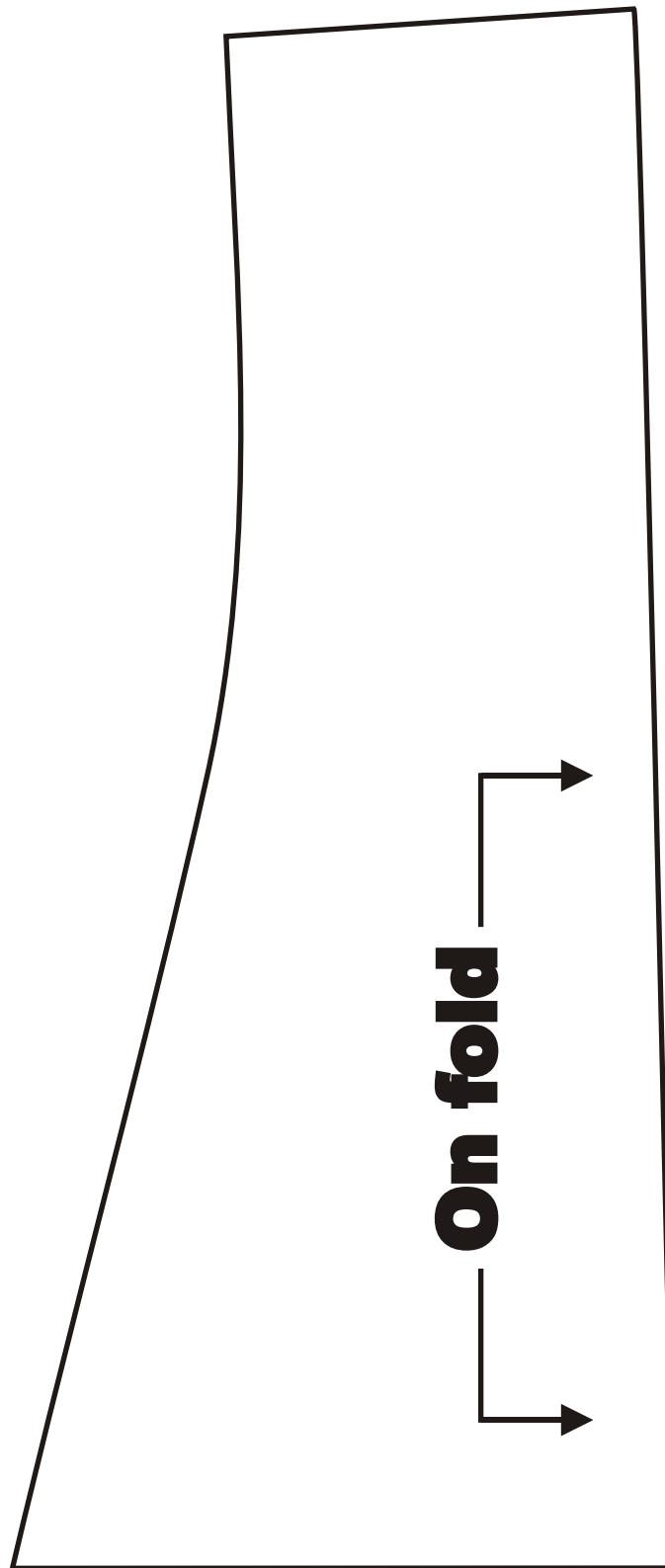


Line A
This line matches line B on
second half of Center Top
Attach 2 pieces together and cut
as one piece.

End of Dart:
Sew to here

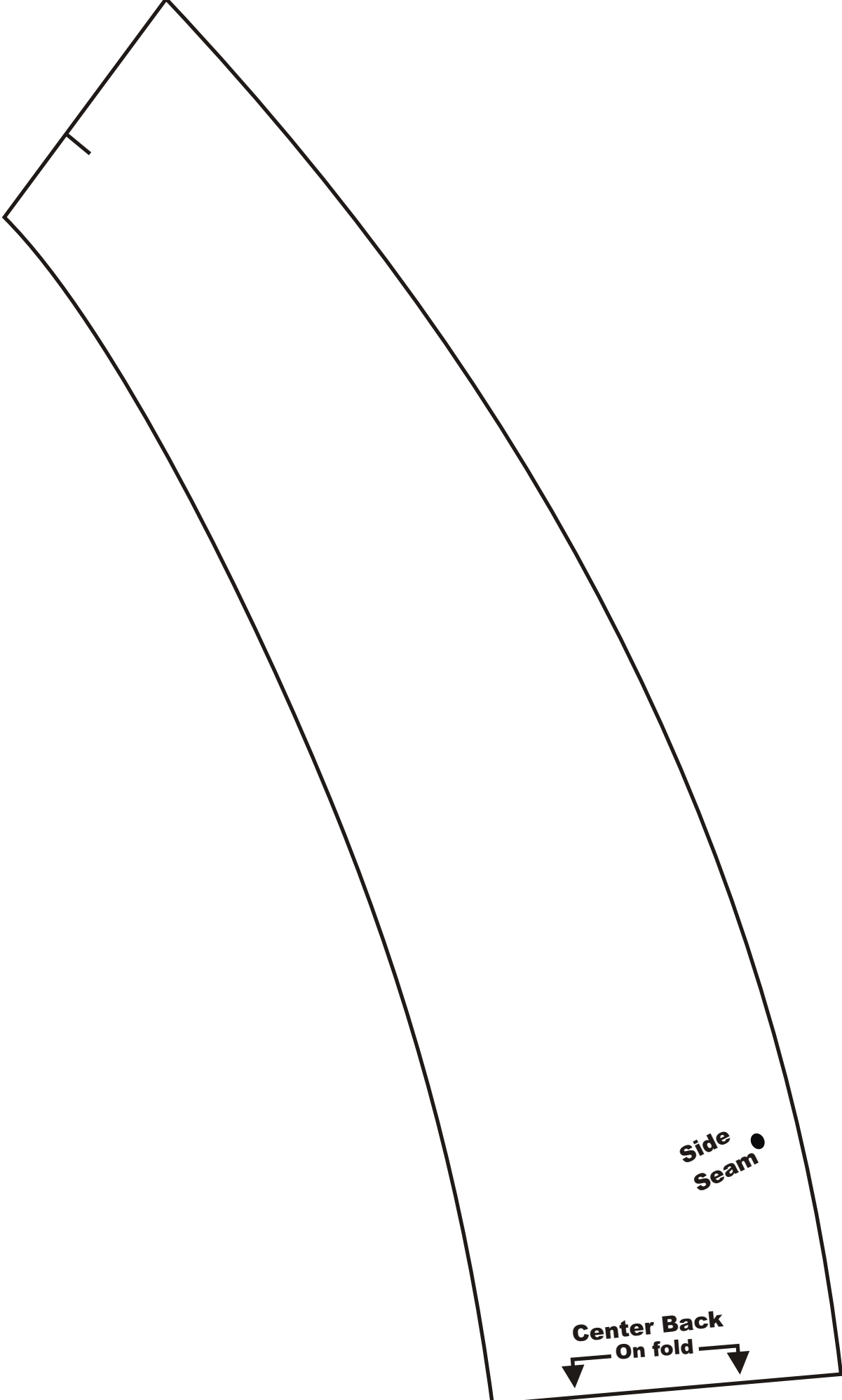
Center Top





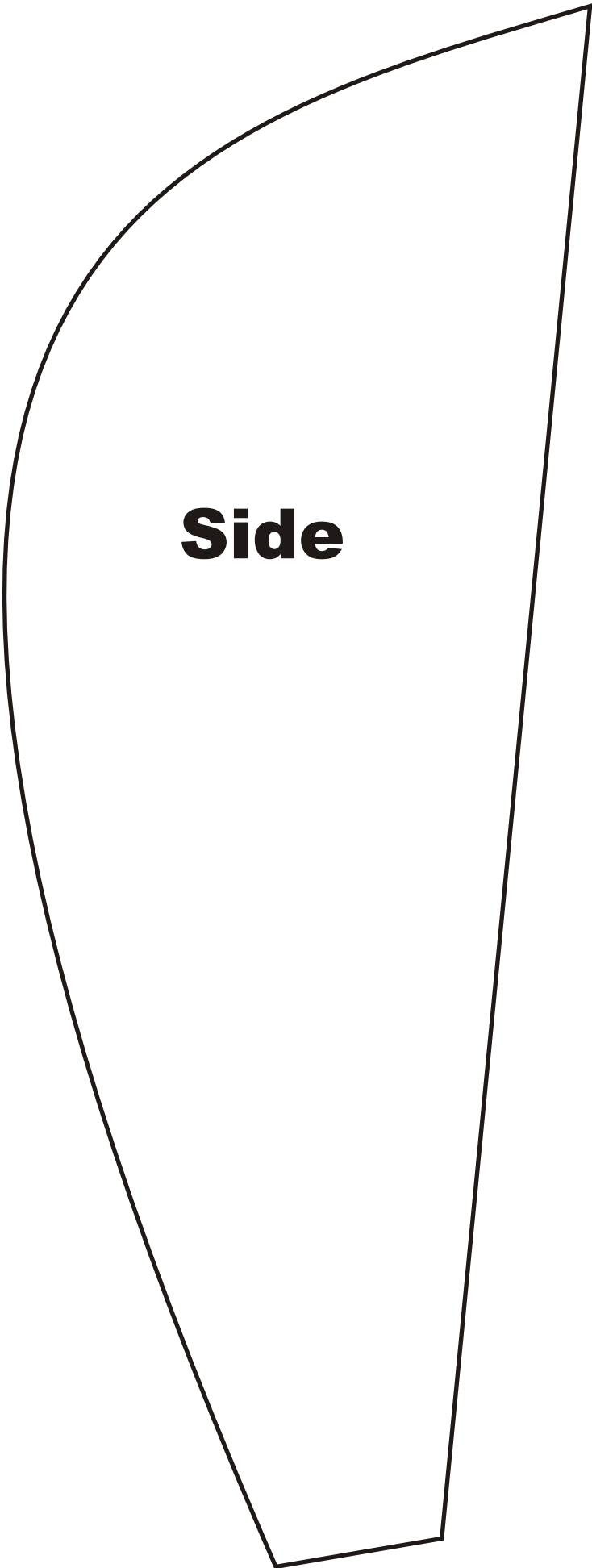
Line B

This line needs to be matched with Line A on previous page. Attach 2 pieces together and cut as one piece.

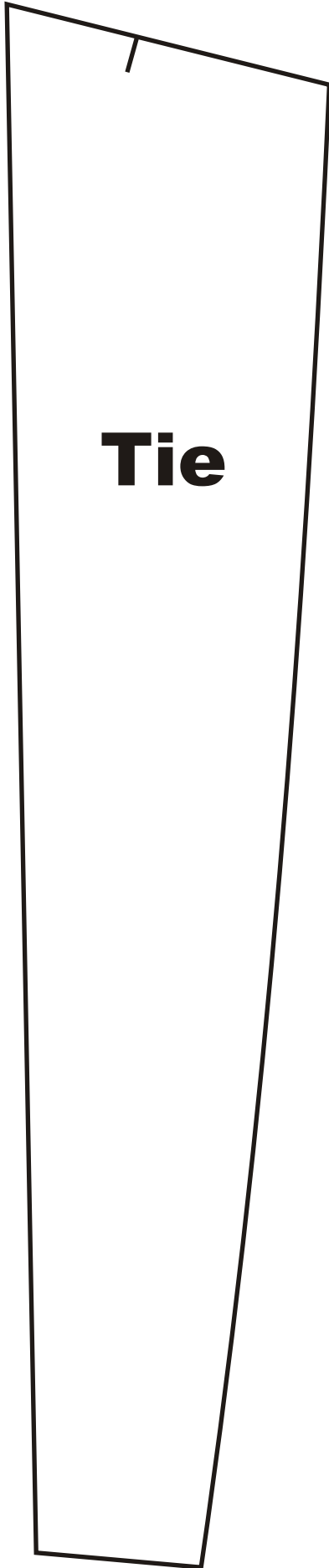


**Side
Seam** ●

**Center Back
On fold** —> —>



Side



Tie